

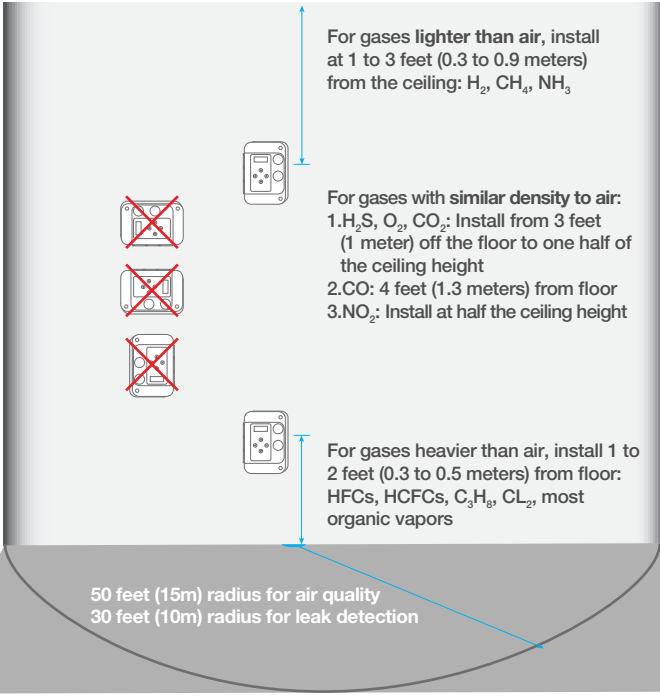


OPERA INC. IS NOW
BELIMO SENSORS INC.

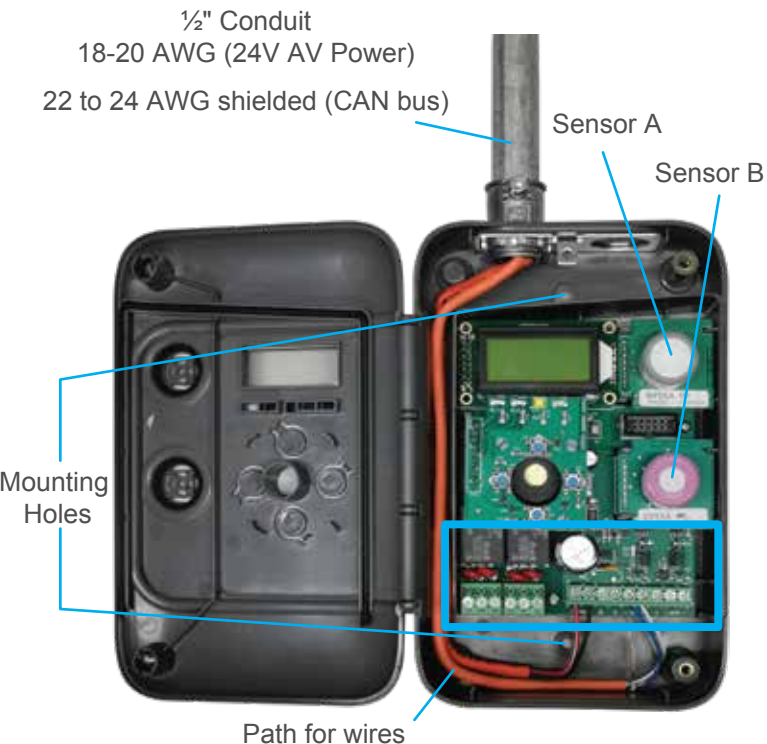
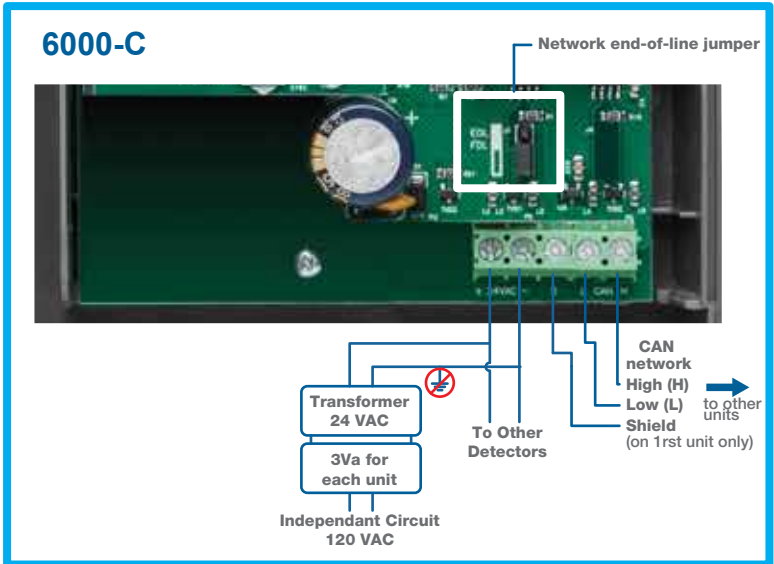
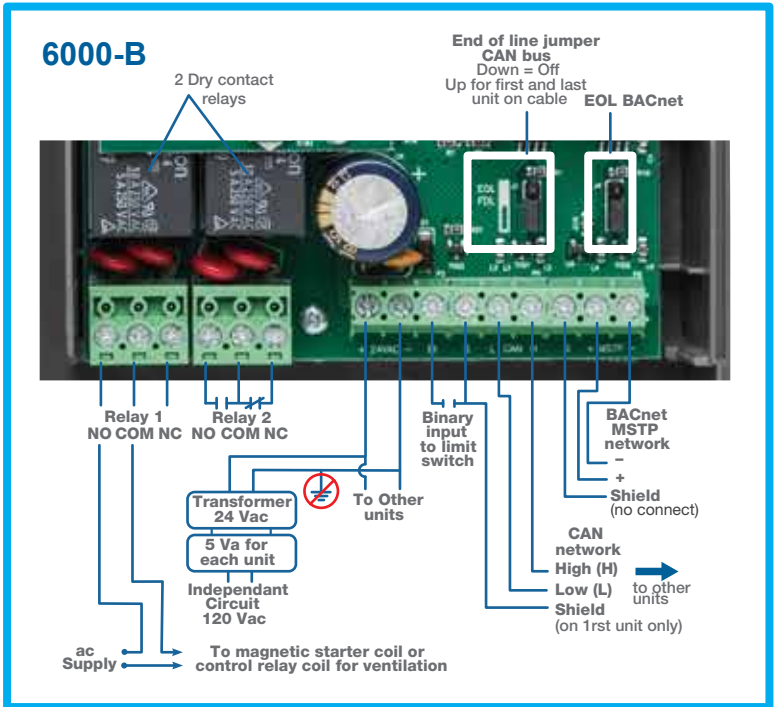
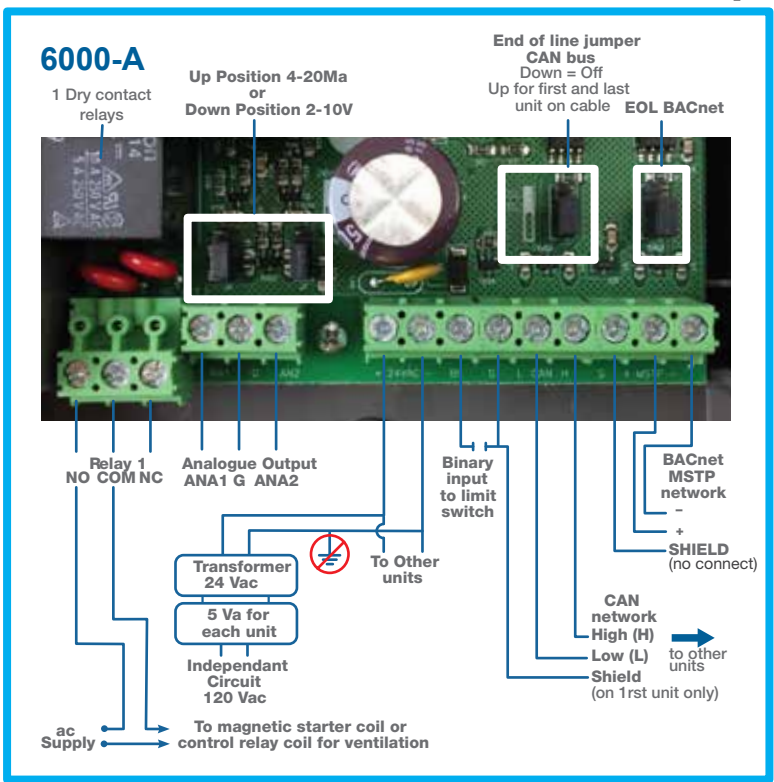


INSTALLATION INSTRUCTIONS
6000 GAS MONITOR

Refer to Operation Manual section 3.3 for installation and section 4 for operation and parameters



Important. All wiring must conform to local building codes, regulations and laws. If the equipment is used in a manner not specified by the manufacturer, the protection provided by the equipment may be impaired.



- Notes:
- 1) Do not obstruct the monitor
 - 2) Do not ground the 24 V AC
 - 3) When using multiple monitors:
 - a) Maintain the same polarity (24 V AC) for all devices
 - b) CAN bus connection:
 - i) Maintain the same polarity (CAN bus) for all devices
 - ii) Use 22 to 24 AWG Twisted & Shielded cable
 - iii) Monitors must be connected in series
 - iv) Switch end of line (EOL) jumpers (for first and last units)

